

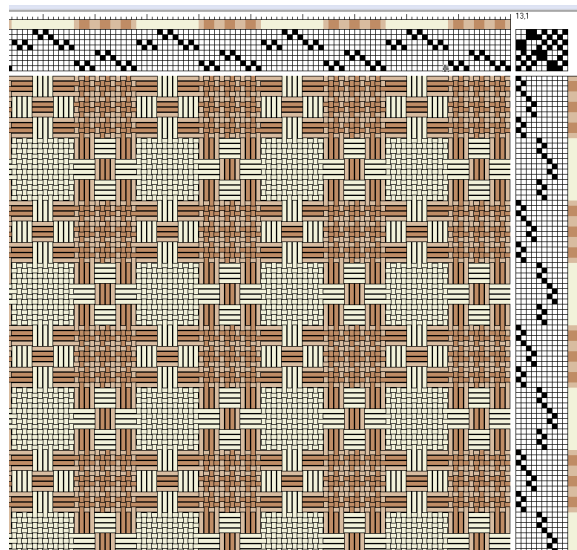
Danish Rosette/Deflected Doubleweave Towels – Diane Pigg, July 2020

This draft has been around a long while, traditionally called Danish Rosette (see [Handwoven](#), May/June 2015 p.44 for the Danish reference). Robin and Russ did a version of it in one of their newsletters, [Drafts and Designs](#) Vol 9, No 8 from April 1967 – Sage & Olive. It's not totally recognizable woven in tweedy wool, but it is the same!

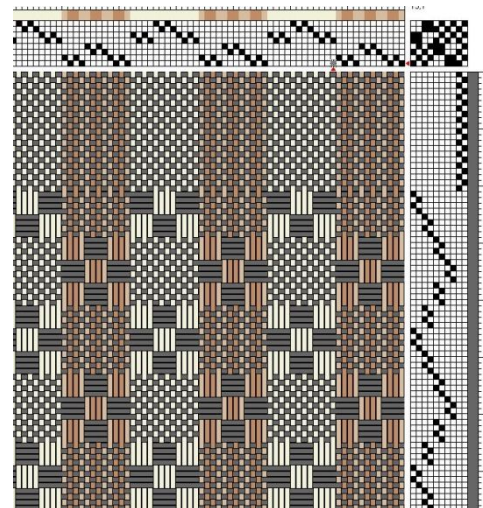


When I received a request from my nephew for towels in neutrals – tan, cream, beige, I decided to try this draft out. I liked those so well, that I threaded it up again for another request, using yellow, gray, black & white for the towels. There are lots of variations to try, and you can concentrate on the borders if you want to take a break from frequent color changes. These towels were woven with 8/2 cotton sett at 20 epi.

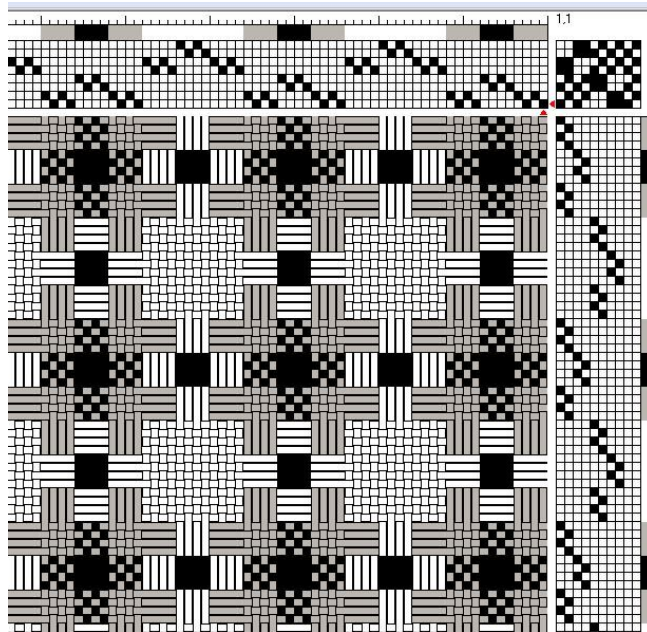
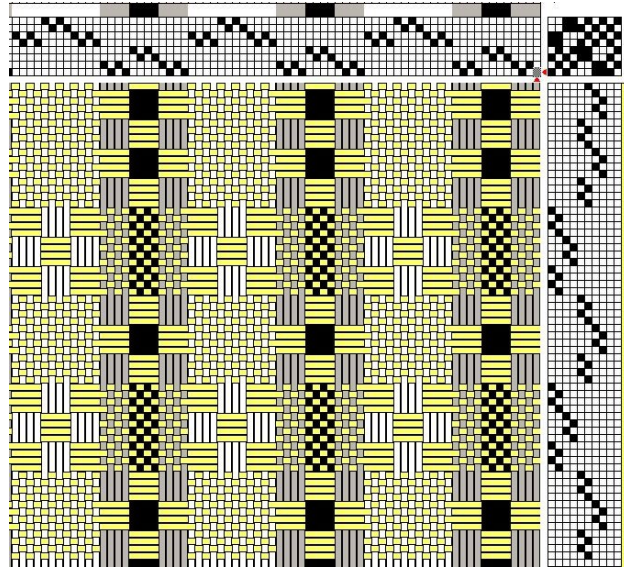
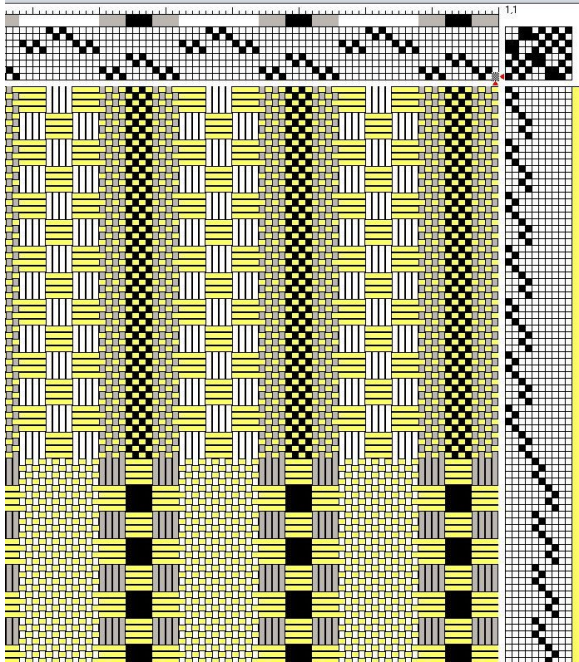
The threading is pretty simple – repetitive blocks and easy to check. Here is the basic draft in neutral shades:



I only completed one towel with all the color changes in the weft – I found it wasn't worth it.



Here's the yellow variation – lots of color and treading options! Have fun!



Tromp as Writ