

## Historical Weaving Publications

A lot of the publications that reside in binders in the guild library are also available online! The Ralph Griswold On-Line Digital Archive of Documents on Weaving and Related Topics (<https://www2.cs.arizona.edu/patterns/weaving/index.html>) is hosted by the University of Arizona – Ralph was a professor there, and scanned many of the documents on the server. These are free to download at your convenience!

You will find most of the newsletter type publications under “**Periodicals**” here: <https://www2.cs.arizona.edu/patterns/weaving/periodicals.html>

Some of the highlights include:

Drafts and Designs (1959-1979)

Loom Music (1944-1965)

Looming Arts (1968-1995)

Master Weaver (1961-1965)

Posselt’s Textile Journal (1907-1910)

Practical Weaving Suggestions (1940-1971)

The Shuttle Craft Bulletin (1924-1964)

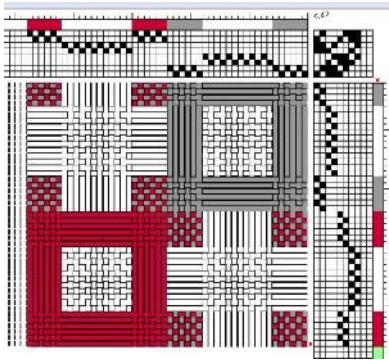
Warp & Weft (1947-1985)

Weaver’s Journal (1984-1987)

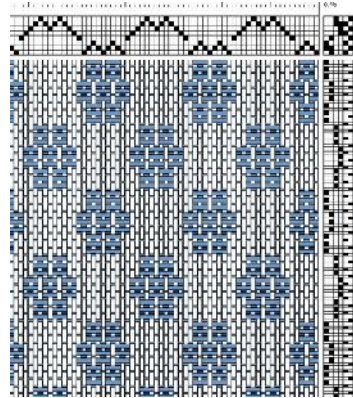
You might also want to check out the “**Monographs**” section here: <https://www2.cs.arizona.edu/patterns/weaving/monographs.html>

These are often single topic publications, or series that may not have been regular enough for periodical status. Some of the highlights include several topics by Mary Meigs Atwater, the Josephine Estes miniature overshot collection (2 volumes) and the Elmer Wallace Hickman “folios”. There’s a lot to poke around and discover!

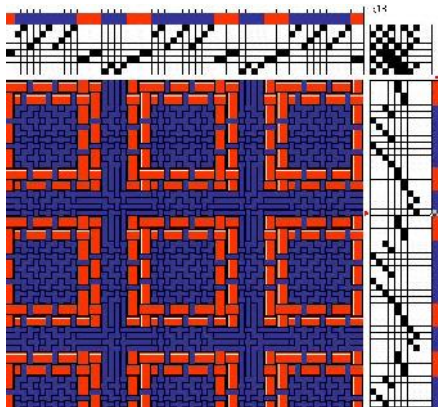
I collected a few that I’ve already entered into Fiberworks, so you can get an idea of what’s available.



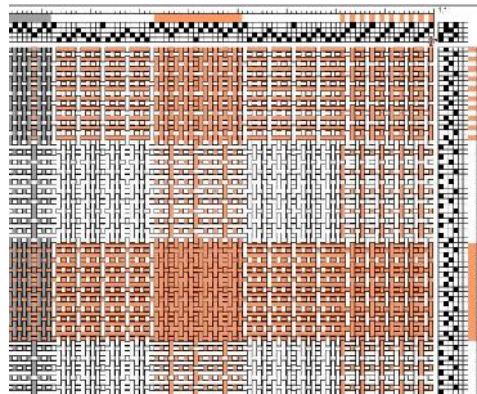
DAD Vol 2  
No 8 –  
Deflected  
Doubleweave



DAD Vol 2 No 10  
– Overshot  
variation (watch  
floats – this is  
the back)



DAD Vol 4 No 10 –  
Squares (Nice on both  
sides)



Elmer Wallace Hickman – New  
Weaves from Old Folio 2 –  
Magnolia Blossom



15. AULD LANG SYNE (Draft under sample)  
 WARP: Thomas Hodgson's 2-ply Worsted  
 S-Brown(Seal), R-Rust(Tile), T-Tan  
 (Camel Heather), G-Cream, O-Gold.  
 WARP ORDER: (as shown on draft)  
 16 ends Brown, 2 ends Gold.  
 Alternate 7 ends Tan, and 7 ends Cream  
 (that is, one end Tan, one end Cream  
 seven times), 2 ends Rust. Alternate  
 6 ends Gold and 6 ends Brown. 2 ends  
 Cream. Alternate 5 ends Brown and 5  
 ends Rust. 2 ends Brown. Alternate 6  
 ends Cream and 6 ends Tan. (72 ends.)  
 WEFT: Same yarns as the warp.  
 TREADLING: Follow the same number of  
 warp-order ends for the weft shots as  
 shown on the draft in TABBY TALK, and  
 above.  
 The treading is Tabby (Hars. 143-244).  
 sky warp 24 ends to inch

